



**OLYMPIA FAUCETS, INC.**  
3325 S. Garfield Ave.  
Commerce, CA 90040  
(888) 772-7701  
www.olympiafaucets.com

# INSTALLATION

## Tools:



Adjustable Wrench



Plumbers Putty



Teflon Tape



Rags

## Model Number: K-5270, K-5271

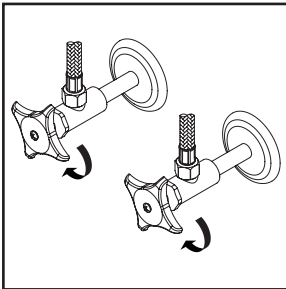
### Warnings and Notes:

Check with local plumbing code requirements before installation.  
This product should be installed by a local listed plumber.  
**Do not use plumbers putty on threads.**

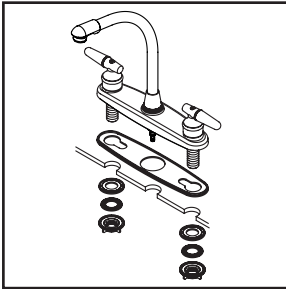


### Installation Steps:

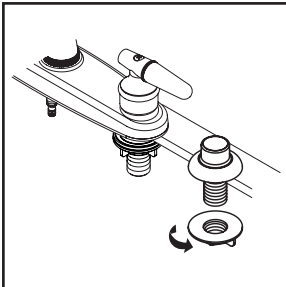
#### Two Handle Kitchen Faucet



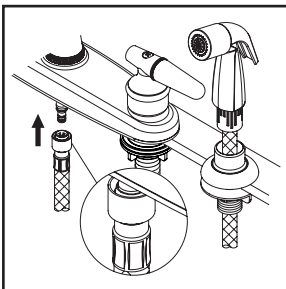
(1) Shut off the water supply. Remove old faucet. Clean mounting surface in preparation for new faucet.



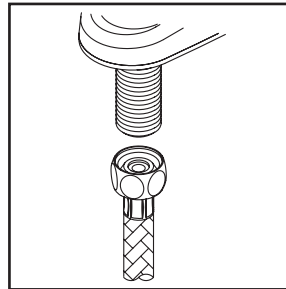
(2) Apply adequate plumbers putty along the boundary of base gasket. Align faucet with mounting holes and place faucet on the sink. Slide washers on shanks and secure the locknuts to the shanks from underneath the sink. Go to step (5) if faucet is without side spray.



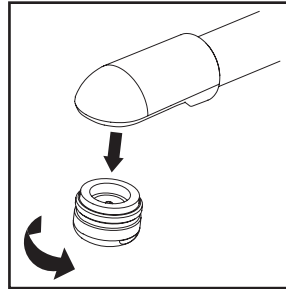
(3) Place side spray holder on mounting hole. Tighten locknut from underneath the sink to secure side spray holder.



(4) Lead side spray hose through side spray holder. Insert spray head hose quick connect adapter into faucet outlet hose end, push until a "click" is heard. Pull side spray hose downward to test engagement.

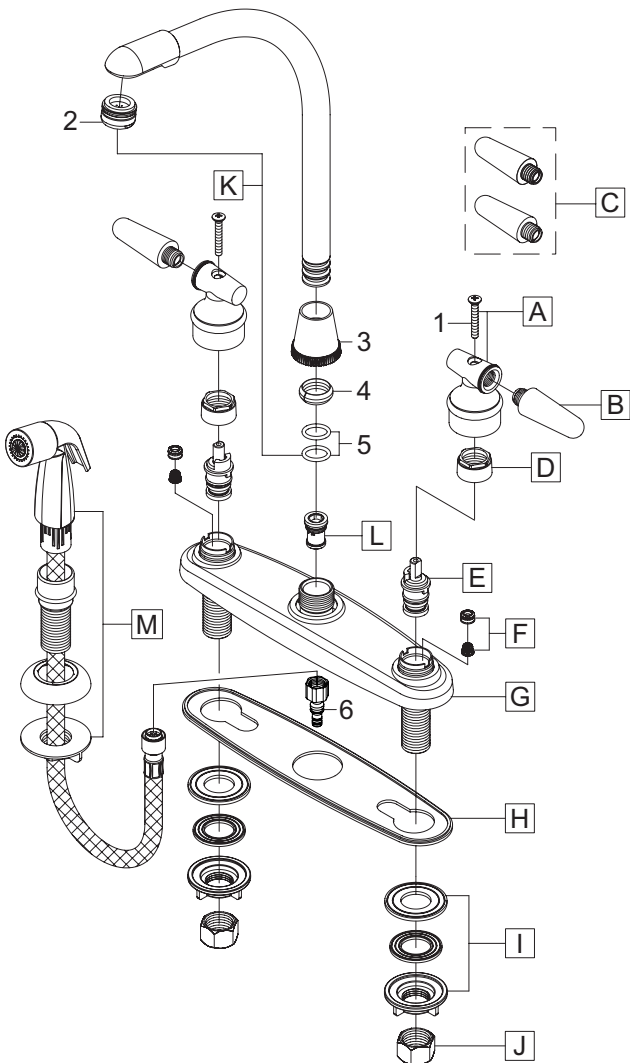


(5) When using stainless steel braided faucet supply hose; this faucet requires one end of the supply hose to have a 1/2" female IPS connection. The other end of this supply hose must match the thread on the water supply valve under your sink. Once you've identified the required size, carefully follow the manufacturer's installation instructions for each hose.



(6) Important: After installation is complete, remove the aerator. Turn on the water and allow both hot and cold water to run for at least one minute each. While water is running, check for leaks. Turn off the water and replace the aerator when finished.

## Exploded Drawing:



	ITEM #	DESCRIPTION
A	OP-190006C, H	Handle Hub Cold, Hot
B	OP-490017	Chrome Insert
C	OP-490018	White Insert
D	OP-490040	Bonnet Nut
E	OP-390004	Cartridge
F	OP-490041	Springs and Seats
G	OP-420025	Deck Plate
H	OP-420026	Base Gasket
I	OP-520009	Mounting Locknuts & Washers
J	OP-590001	Supply Nuts
K	OP-220003	High Rise Spout
L	OP-420024	Diverter Piston (For K-5271)
M	OP-420078	Side Spray Assembly (For K-5271)
1	OP-490042	Handle Hub Screw
2	OP-490010	1.5 GPM Aerator
3	OP-420021	Spout Bonnet Nut
4	OP-490038	Spout snap ring
5	OP-490039	Spout O-rings
6	OP-420083	Quick Connect Adapter

**OLYMPIA**

For more care information or trouble shooting inquiries  
about your Olympia product, Please call:  
**OLYMPIA FAUCETS, INC.** (888) 772-7701  
Monday-Friday 8 AM to 8 PM EST (5 AM to 5 PM PST)  
[www.olympiafaucets.com](http://www.olympiafaucets.com)