



OLYMPIA FAUCETS, INC.
3325 S. Garfield Ave.
Commerce, CA 90040
(888) 772-7701
www.olympiafaucets.com

INSTALLATION

Tools:



Adjustable Wrench



Plumbers Putty

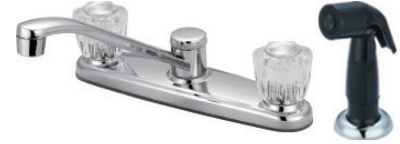


Teflon Tape



Rags

Model Number: K-5120, K-5121, K-5130, K-5131
K-5150, K-5160, K-5161, K-5170, K-5171

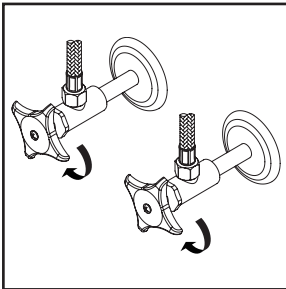


Warnings and Notes:

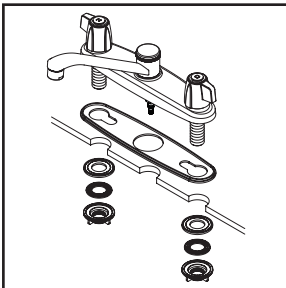
Check with local plumbing code requirements before installation.
This product should be installed by a local listed plumber.
Do not use plumbers putty on threads.

Installation Steps:

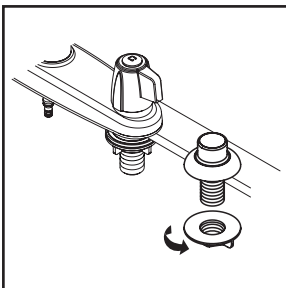
Two Handle Kitchen Faucet



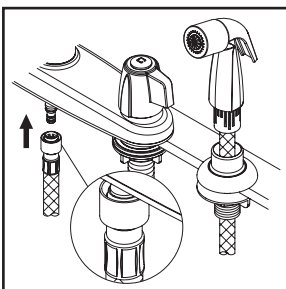
(1) Shut off the water supply. Remove old faucet. Clean mounting surface in preparation for new faucet.



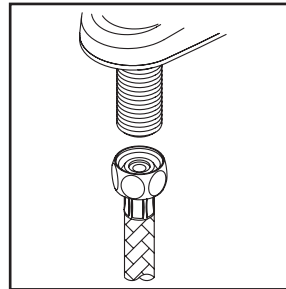
(2) Apply adequate plumbers putty along the boundary of base gasket. Align faucet with mounting holes and place faucet on the sink. Slide washers on shanks and secure the locknuts to the shanks from underneath the sink. Go to step (5) if faucet is without side spray.



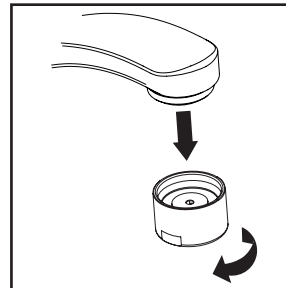
(3) Place side spray holder on mounting hole. Tighten locknut from underneath the sink to secure side spray holder.



(4) Guide the side spray hose through the side spray holder. Insert the side spray hose quick connect adapter into faucet outlet end, push until a "click" is heard. Pull side spray hose downward to test engagement.



(5) When using stainless steel braided faucet supply hose; this faucet requires one end of the supply hose to have a 1/2" female IPS connection. The other end of this supply hose must match the thread on the water supply valve under your sink. Once you've identified the required size, carefully follow the manufacturer's installation instructions for each hose.

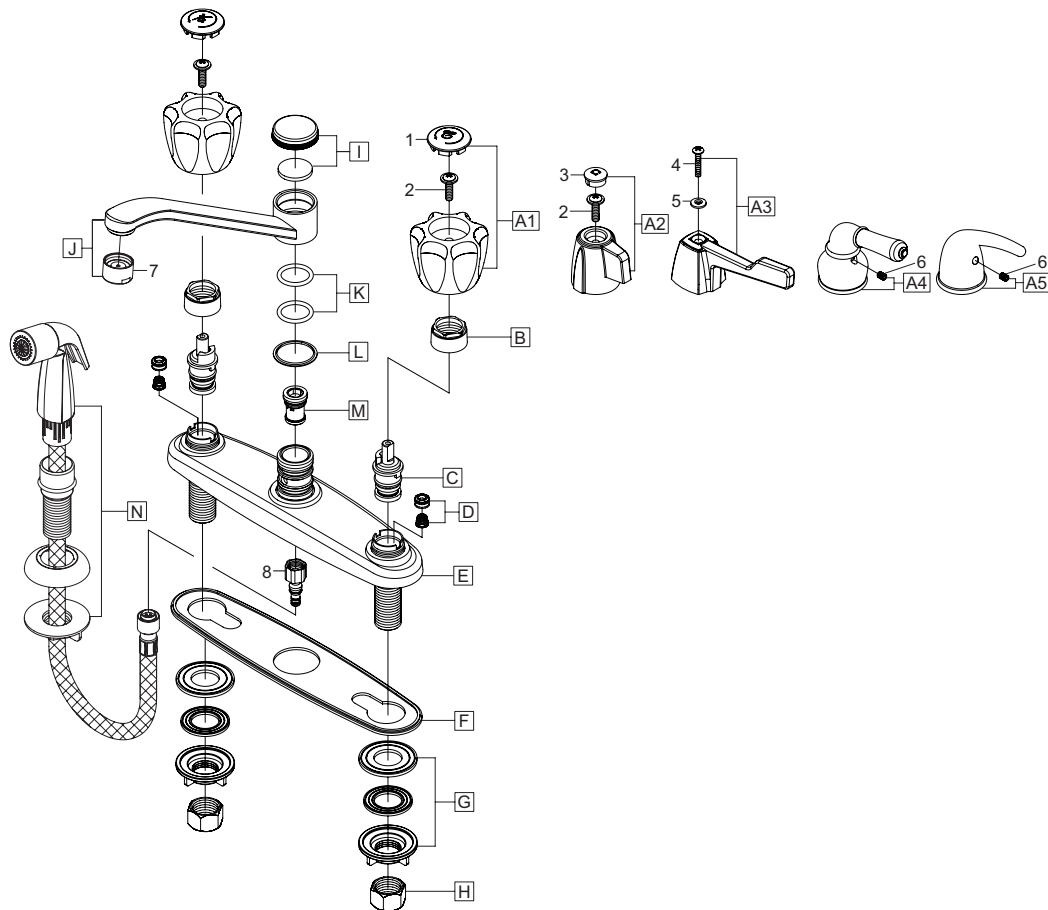


(6) Important: After installation is complete, remove the aerator. Turn on the water and allow both hot and cold water to run for at least one minute each. While water is running, check for leaks. Turn off the water and replace the aerator when finished.

Exploded Drawing:

	ITEM #	DESCRIPTION
J	OP-220002	Spout
K	OP-420019	O-rings
L	OP-420020	Gasket
M	OP-420024	Diverter Piston
N	OP-420078	Side Spray Assembly
1	OP-490012C, H	Acrylic Handle Button Cold, Hot
2	OP-490025	Screw
3	OP-490013C, H	Mini Blade Handle Button Cold, Hot
4	OP-490015	Handle Screw
5	OP-490016C, H	Wrist Blade Handle Button Cold, Hot
6	OP-490029	Allen Screw
7	OP-490035	1.5 GPM Aerator
8	OP-420083	Quick Connect Adapter

	ITEM #	DESCRIPTION
A1	OP-190003C, H	Acrylic Handle Cold,Hot
A2	OP-190004C, H	Mini Blade Handle Cold, Hot
A3	OP-190005C, H	Wrist Blade Handle Cold, Hot
A4	OP-190010C, H	Lever Handle Cold, Hot
A5	OP-190015C, H	Lever Handle Cold, Hot
B	OP-490040	Bonnet Nut
C	OP-390004	Cartridge
D	OP-490041	Springs and Seats
E	OP-420025	Deck Plate
F	OP-420026	Base Gasket
G	OP-520009	Mounting Locknuts & Washers
H	OP-590001	Supply Nuts
I	OP-420018	Spout Cap & Washer



OLYMPIA

For more care information or trouble shooting inquiries about your Olympia product, Please call:
OLYMPIA FAUCETS, INC. (888) 772-7701
 Monday-Friday 8 AM to 8 PM EST (5 AM to 5 PM PST)
www.olympiafaucets.com