

# Rosendale 107

DU-ROS-107-IO



## Undermount / Drop in basin

- Made from ENGLISHCAST™
  - One piece casting of Volcanic Limestone™ and resin
  - Harder & more durable than acrylic
- Can be countertop mounted or semi recessed
- Easy clean high gloss finish
- Integrated internal overflow
- 25 year warranty



## Plan vasque à semi-encastrer ou à encastrer par le dessous

- Fabriquée en ENGLISHCAST™
  - Ensemble d'une pièce en pierre volcanique rare et résine
  - Matériau plus dur et plus résistant que l'acrylique
- Vasque à poser ou à semi-encastrer
- Fini ultra brillant, facile à nettoyer
- Trou de trop-plein intégré
- Garantie de 25 ans



## Lavabo bajo encastre / semi encastrado

- Hecho de ENGLISHCAST™
  - Hecho en una pieza de piedra volcánica y resina
  - Más resistente y duradero que acrílico
- Con posibilidad de instalarlo sobre la encimera o semiencastrado
- Fácil de limpiar y acabado brillante
- Dispositivo interno integrado para protección ante desbordamientos
- 25 años de garantía

25  
years

Warranty for residential use for 25 years\*  
25 ans de garantie pour un usage domestique\*  
Garantía de 25 años para uso domestico\*

8  
years

Warranty for commercial use for 8 years\*  
8 ans de garantie pour un usage commercial\*  
Garantía de 8 años para uso comercial\*

# Rossendale 107

DU-ROS-107-IO

victoria ⊕ albert®

volcanic limestone baths

## Special Options/Options spéciales/Opciones especiales

### Recommended: K22/K24/K25/K122

Conseillé / Recomendado



Internal overflow  
Trop-plein interne  
Rebosadero integrado



K24



K25



K22



K122

## Related collections

Collections connexes / Colecciones relacionadas



Florin faucet - FLO-09



Tubo faucet - TU-19



Undermount

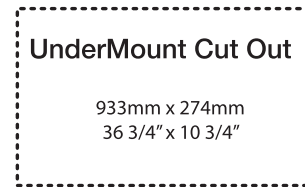
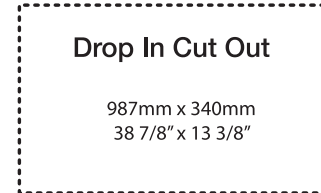
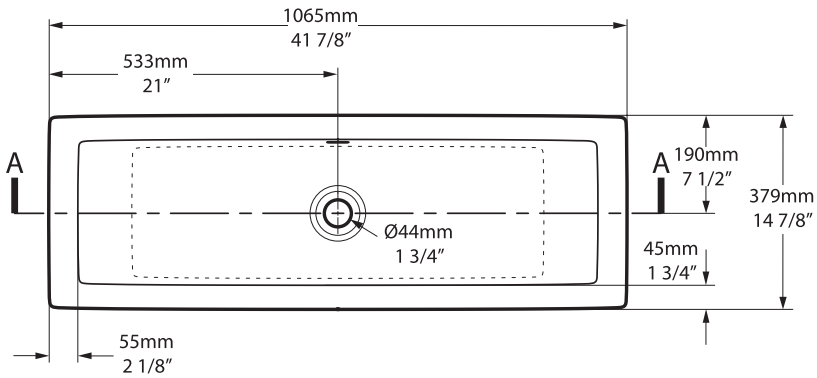


Drop-in

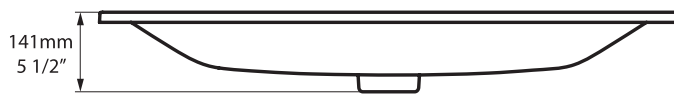
# Rossendale 107

DU-ROS-107-IO

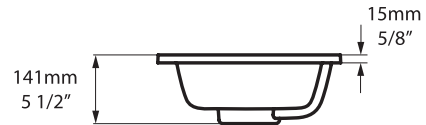
## Top view



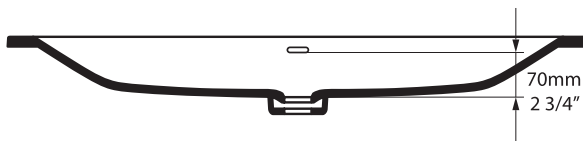
## Front view



## Side view

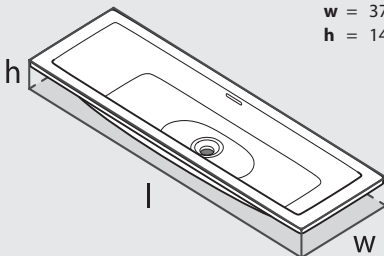


## Section AA



\*All measurements subject to +/-5% tolerance

**l** = 1065mm / 41<sup>7</sup>/<sub>8</sub>"  
**w** = 379mm / 14<sup>7</sup>/<sub>8</sub>"  
**h** = 141mm / 5<sup>1</sup>/<sub>2</sub>"



.dwg | .dxf | .skp [www.vandabaths.com](http://www.vandabaths.com)



Massachusetts Code: Approved  
cUPC listing by IAPMO: File No. 6574



VA/1181/03/Jan19